

GWCD CD Weld Studs

Features

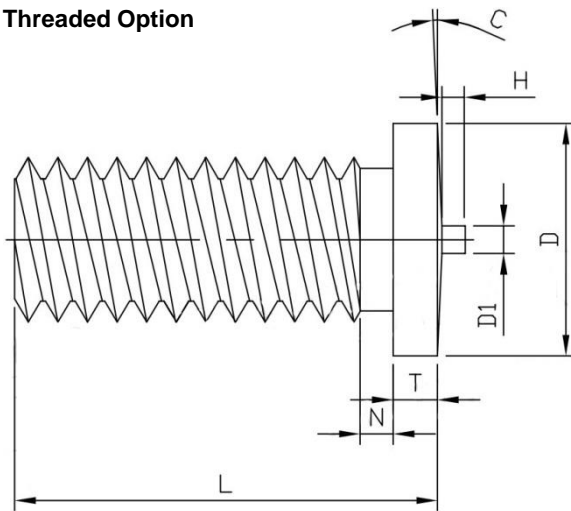
- Each stud material has different levels of weldability with different parent materials
- Mild steel studs are finished in a copper coat for electrical continuity and rust protection, other finishes are available upon request
- Stainless steel studs are also available in 316 grade material upon request
- Available as threaded or unthreaded types



Material

- Steel, copper plating or stainless steel, plain finish

Threaded Option

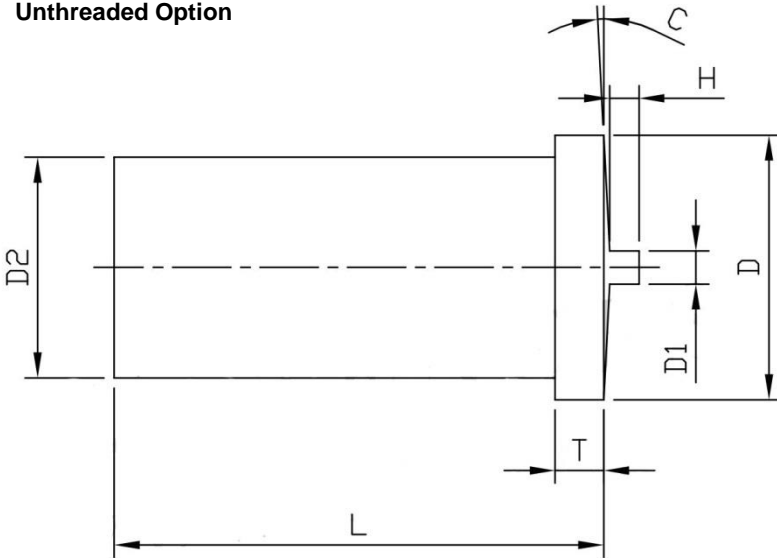


Dimensions : ISO metric / mm

Part No.	Thread Size	Material	Finish	D ±0.2	D1 ±0.08	H ±0.05	T	N Max.	C ±1°
GWCD-M3-[L]	M3 x 0.5	Steel	Copper Plating	4.5	0.60	0.55	0.7 ~ 1.4	1.5	3°
GWCD-S-M3-[L]		Stainless Steel	Plain						
GWCD-M4-[L]	M4 x 0.7	Steel	Copper Plating	5.5	0.65	0.80	0.8 ~ 1.4	2	
GWCD-S-M4-[L]		Stainless Steel	Plain						
GWCD-M5-[L]	M5 x 0.8	Steel	Copper Plating	6.5	0.75	0.85	0.8 ~ 1.4	3	
GWCD-S-M5-[L]		Stainless Steel	Plain						
GWCD-M6-[L]	M6 x 1.0	Steel	Copper Plating	7.5	0.75	0.85	0.8 ~ 1.4	3	
GWCD-S-M6-[L]		Stainless Steel	Plain						
GWCD-M8-[L]	M8 x 1.25	Steel	Copper Plating	9.0	0.75	0.85	0.8 ~ 1.4	3	
GWCD-S-M8-[L]		Stainless Steel	Plain						
GWCD-M10-[L]	M10 x 1.5	Steel	Copper Plating	11.0	0.75	0.85	0.8 ~ 1.4	3	
GWCD-S-M10-[L]		Stainless Steel	Plain						

Thread Size	L + 0.6													
M3 x 0.5	6	8	10	12	15	16	20	25	30					
M4 x 0.7	6	8	10	12	15	16	20	25	30	35	40			
M5 x 0.8	6	8	10	12	15	16	20	25	30	35	40	45		
M6 x 1.0	8	10	12	15	16	20	25	30	35	40	45	50	55	
M8 x 1.25	10	12	15	16	20	25	30	35	40	45	50	55	60	
M10 x 1.5	20	25	30	35	40	45	50							

Unthreaded Option



Dimensions : ISO metric / mm

Part No.	D2 Pin Diameter $\Phi \pm 0.1$	Material	Finish	D ± 0.2	D1 ± 0.08	H ± 0.05	T	C $\pm 1^\circ$
GWUCD-3-[L]	3	Steel	Copper Plating	4.5	0.60	0.55	0.7 ~ 1.4	3°
GWUCDS-3-[L]		Stainless Steel	Plain					
GWUCD-4-[L]	4	Steel	Copper Plating	5.5	0.65	0.80		
GWUCDS-4-[L]		Stainless Steel	Plain					
GWUCD-5-[L]	5	Steel	Copper Plating	6.5	0.75	0.85		
GWUCDS-5-[L]		Stainless Steel	Plain					
GWUCD-6-[L]	6	Steel	Copper Plating	7.5	0.75	0.85		
GWUCDS-6-[L]		Stainless Steel	Plain					
GWUCD-71-[L]	7.1	Steel	Copper Plating	9.0	0.75	0.85	0.8 ~ 1.4	
GWUCDS-71-[L]		Stainless Steel	Plain					

Pin Diameter $\Phi \pm 0.1$	L + 0.6									
3	6	8	10	12	15	20	25	30		
4	8	10	12	15	20	25	30	35	40	
5	8	10	12	15	20	25	30	35	40	
6	10	12	15	20	25	30	35	40	45	50
7.1	10	12	15	20	25	30	35	40	45	50